



## PRODUCTION MANUAL 2016

### VENUE FEATURES

Direct drive in access for all vehicles, including Pantech trucks. (4m w x 4.3m h)  
Fully sound proofed  
Total black out  
Full venue draping for optimum sound  
Covered floor trenches for cabling  
Parking for outside broadcasting vans  
24 hour onsite security service  
Wi-Fi and Ethernet Internet  
Performers green rooms, with bathroom facilities and Wi-Fi

### DIMENSIONS

Ground level: 49.2m x 30.4m  
Floor Load capacity: 10KPa distributed, 1 tonne concentrated

Mezzanine: 13.4m x 30.4m  
Floor level: 3.7m above ground level  
Floor Load capacity: 5KPa distributed

Internal Height: 9m at eaves, 14m at centre

### POWER

Total Power available: 800 amps

Distribution: 4 x EDB, 2 located on southern wall, 1 each on NW wall & NE wall just under mezzanine  
Each EDB fitted with 1 x 250amp powerlock and 2 x 40amp 3 phase Wilco outlets  
8 x GPO around the walls all running off the same circuit.

### RIGGING

There are 7 trusses in the auditorium area available for rigging each with multiple load points. There are 3 types of load points.

#### Portal Frame (Truss)

Multiple load points per each single truss can be used providing the total load for each truss does not exceed a SWL of 8000kg

#### Load Point Type 1 (LP1)

LP1's can carry up to a maximum 2000kg SWL "vertically".

Adjacent to LP1 is an available redundant or safety hanging point located approximately 300mm away that also carries a maximum 2000kg SWL "vertically". This is designed for safety rigging for the first point. Either one of these points can be loaded with the maximum of 2000kg SWL "vertically" or alternatively the load can be spread over the 2 points to a maximum of 2000kg combined load.

LP1's are located approximately 3 metres apart along each truss.

Bridling between LP1 points on different trusses can be achieved carrying a 1000kg SWL to a maximum of 45 degrees. Bridling between LP1 points on the same truss can be achieved carrying a 500kg SWL to a maximum of 45 degrees.



#### Load Point Type 2 (LP2)

LP2's can carry up to a maximum 500kg SWL "vertically".

Adjacent to LP2 is an available redundant or safety hanging point located approximately 300mm away that also carries a maximum 500kg SWL "vertically". This is designed for safety rigging for the first point. Either one of these points can be loaded with the maximum of 500kg SWL "vertically" or alternatively the load can be spread over the 2 points to a maximum of 500kg combined load.

LP2's can be found around the perimeter of the Big Top where the concrete wall finishes and the truss begins.

No bridling is allowed between LP1 and LP2 hanging points. Spreader beam configurations can be used but will require sign off by a building engineer.

#### Load Point Type 3 (LP3)

LP3's can carry up to a maximum vertical load of 100kg SWL "vertically".

These hanging points are available due to duct work being positioned over existing LP1's and are located around the duct work toward the suspended plant room.

Bridling between these points is forbidden.

#### Spreader Beams

At the southern end of the building a series of spreader beams have been installed to assist in rigging of lighting grids etc. Each beam is fitted with a dolly that can travel along the length of the beam. There are two types of dolly's. Type A are installed on the second and third bays of spreader beams and Type B are installed on the beams in the bay closest to the southern wall. Type A can carry up to a maximum vertical load of 1000kg "vertically". Type B can carry up to a maximum vertical load of 500kg "vertically". Bridling between these dolly's is forbidden.

### **STAGING**

SICO Fold n' Set Stage:

Reversible decks (Black Tuff-Deck surface or grey carpeted surface)  
Standard stage size 16.8m x 8.4m (49 sections)  
30 additional stage sections available (price available on application)  
1 x nine rise step with wheels and guard rails.  
27m (8' sections) of guard rails.  
Load capacity: 125lbs/sq foot or 16000lbs sway load  
Stage Leg Height: 1.2 to 1.9m  
Skirt for front of stage 16.8m (7 pieces of 2.4m wide each)  
LPS staff will erect and dismantle the stage to the hirers specifications.

Megadeck Risers:

1 x Megadeck Alloy Black Carpet Top Rolling Drum Riser\*  
2.4m x 2.4m (2 sections 8'x4')  
6 x 600mm high legs with lockable, rolling wheels  
6 x 350mm high legs with lockable, rolling wheels

1 x Megadeck Alloy Black Timber Top Rolling DJ Riser\*  
2.4m x 600mm  
4 x 900mm high legs with lockable, rolling wheels

\*Price available on application

### **BARRIER**

Framelock Crowd Barrier:

80 x hi-tensile aluminium interlocking anti-trip straight panels  
8 x hi-tensile aluminium interlocking adjustable double hinge corner panels



(swivels 0° - 360°)

### **PYROTECHNICS**

Only suitably qualified persons are able to provide, operate and control any pyrotechnics and other related displays. Prior to commencement a detailed risk assessment must be submitted. Only after the Venue Manager has approved the above will the display be permitted to proceed.

### **DRAPES, SETS & THEMING**

All drapes, sets and materials brought into the Big Top for use in any production must comply with the relevant clauses stipulated in the Building Code of Australia. All materials are to be fire retarded in compliance with the relevant Australian Standards. Where required all materials are to be tagged and copies of relevant certificates forwarded to LPS prior to the event.

### **VESDA ISOLATION**

A Very Early Smoke Detection and Alarm (VESDA) system is installed in the Big Top. Before the commencement of any pyrotechnic or related displays, hot work or use of theatrical smoke, dry ice or any other activity that may cause a false alarm, the VESDA must be isolated. Only the Luna Park Venue Manager or their representative can isolate the system. Security Control must also be notified whenever the VESDA is isolated and deisolated. At all times that the VESDA is isolated a suitably qualified warden must be on fire watch duties. Unless previously agreed with the Venue Manager this warden will be from security personnel.

### **HOUSE LIGHTS**

Each light fitting or Highbay in the Big Top arena consists of 4 x 100W halogens surrounding a 150W metal halide lamp. The light fittings under the mezzanine area consist of 26W compact fluorescent lamps. The halogen and fluorescent lamps can be controlled by the panel at the rear of the building. The halogen lamps can also be controlled by the event lighting console using the 5 pin DMX outlet located on the western wall on the mezzanine level.

### **ELECTRICAL**

All electrical work in the Big Top must only be carried out by a qualified person in accordance with Australian Standards and Codes of Practice. Any work requiring direct intervention, modification or isolation of existing power distribution points can only be done by the on-site Luna Park Sydney Electrician.

### **ELECTRICAL LEAD & TOOL TAGGING**

All electrical leads, portable power tools, junction boxes and earth leakage devices must be tested, inspected by a suitably qualified person and labelled with a tag of current date before being brought onto site.



## In-House Production Specifications

**IN-HOUSE AUDIO SYSTEM** - Supplied by JPJ Audio (formerly Jands Production Services)

### P.A System:

16	JBL Vertec VT4888 Enclosure
16	JPS Sub Bass (1 x JBL 18") Enclosure
6	Meyer UPA 2C Speaker Enclosure
2	Amplifier Rack, Meyer UPA-2C (SR3000)
2	Amplifier Rack, Sub (Crown MA5002)
1	JBL Vertec VT4888 Drive Rack LUNA PARK
4	Amplifier Rack, Vertec (Crown MA5002)
1	Jands Ezicom 4ch Master Station

### Front of House:

1	Midas Verona 480 Console (40 Mono + 8 Stereo) <b>DIGI DESK AVAILABLE ON REQUEST</b> (for an additional cost)
---	---

### Monitors:

1	Midas Siena 480 48ch Console
10	Clair Bros 12AM Monitor Speaker Enclosure
2	Clair Bros 212AM Monitor Speaker Enclosure
2	Clair Bros ML18 Sublow Enclosure
1	Amplifier Rack, ML18 (Crown MA9000i)
3	Amplifier Rack, 4mix 12AM (Crest)
2	dbx 566 2ch Valve Compressor
4	dbx 160X 1ch Compressor/Limiter
4	Drawmer DS201 2ch Noise Gate
1	TC Electronic M5000 Digital Reverb (Single Engine)
4	dbx 1066 2ch Compressor/Gate
1	TC Electronic 2290 Digital Delay
1	Yamaha SPX990 Multi Effects Processor
2	Yamaha SPX1000 Multi Effects Processor
1	Denon DCD-695 CD Player
1	Multi - Mic Stands Case (Luna Park)
1	Multicore Case, Burndy 40ch Input 100m (Luna Park)
8	Urei 5547A Graphic Equaliser
1	Cables Case, Mic/Power/Mon (Luna Park)
1	Klark Teknik DN60 Analyser

### Microphones:

4	Shure SM81 Condenser Mic
7	Shure Beta58A Dynamic Mic
12	Shure SM57 Dynamic Mic
1	Shure Beta52A Dynamic Mic
4	Sennheiser MD-421 Dynamic Mic
2	Shure 12A Dynamic Switch Mic
8	Klark Teknik DN100 Active DI
1	Shure U4D-MA 2ch Receiver
2	Shure U2-MA Handheld Transmitter
2	Shure U2/UR2 Beta58A Mic Capsule
2	Shure HandHeld Mic Clip
2	Shure UA830A Antenna Booster
2	Shure UA820A Dipole Half Wave Antenna
1	BNC Antenna Cable RG8-X, 15.2m



1	BNC Antenna Cable RG8-X, 7.6m
3	Beyer DT-109 Dual Muff Headset (Beige)
1	JANDS E401 COMMS UNIT
1	JANDS E401 COMMS PACK
1	Clearcom Telephone Handsets

Audio Rigging:

2	Lodestar 1ton Chain Motor, 60'
2	System Techs (8 hour call) (Additional \$45/hour per Tech)

**IN-HOUSE LIGHTING RIG** – supplied by Chameleon Touring Systems

Front Truss:

1	60ft 18" Black Box Truss Steel
3	1t Motors
6	Mac 600 Wash
4	VL 2000 Spot
8	Shakespeare Profiles
1	500kg Motor Cable Pick

Back Truss:

1	60ft 18" Black Box Truss Steel
3	1t Motors
6	Mac 600 Wash
6	VL 2000 Spot
4	Molefay Duet
2	Atomic 3000
2	9m x 9m Drapes

Side Truss:

2	9m black Tri Truss
2	Tab Track
4	500kg Chain Blocks
2	Sets of 3 x (3m x 7m) Black Drapes

Control / Effects:

2	Unique Hazers
1	Martin M1

Additional:

10	1.2k Fresnels
----	---------------

Power Distribution:

1	48 Way Rack CW/ 3 x PDS 12, ( <u>36 way Power Distro</u> )
1	HP12, ( <u>12 way Dimmer</u> ), 2 x DD6 Data Splitters
1	PDS 450 Powerlock Distribution

Motor control:

1	8 Way Motor Control
---	---------------------

Aux:

1	System Tech*
---	--------------



**In-House Truss Weights:**

Weight of Front Truss: 950kg / Maximum load: 3000kg / Available: 2050kg  
 Weight of Rear Truss: 1015kg / Maximum load: 1500kg / Available: 485kg

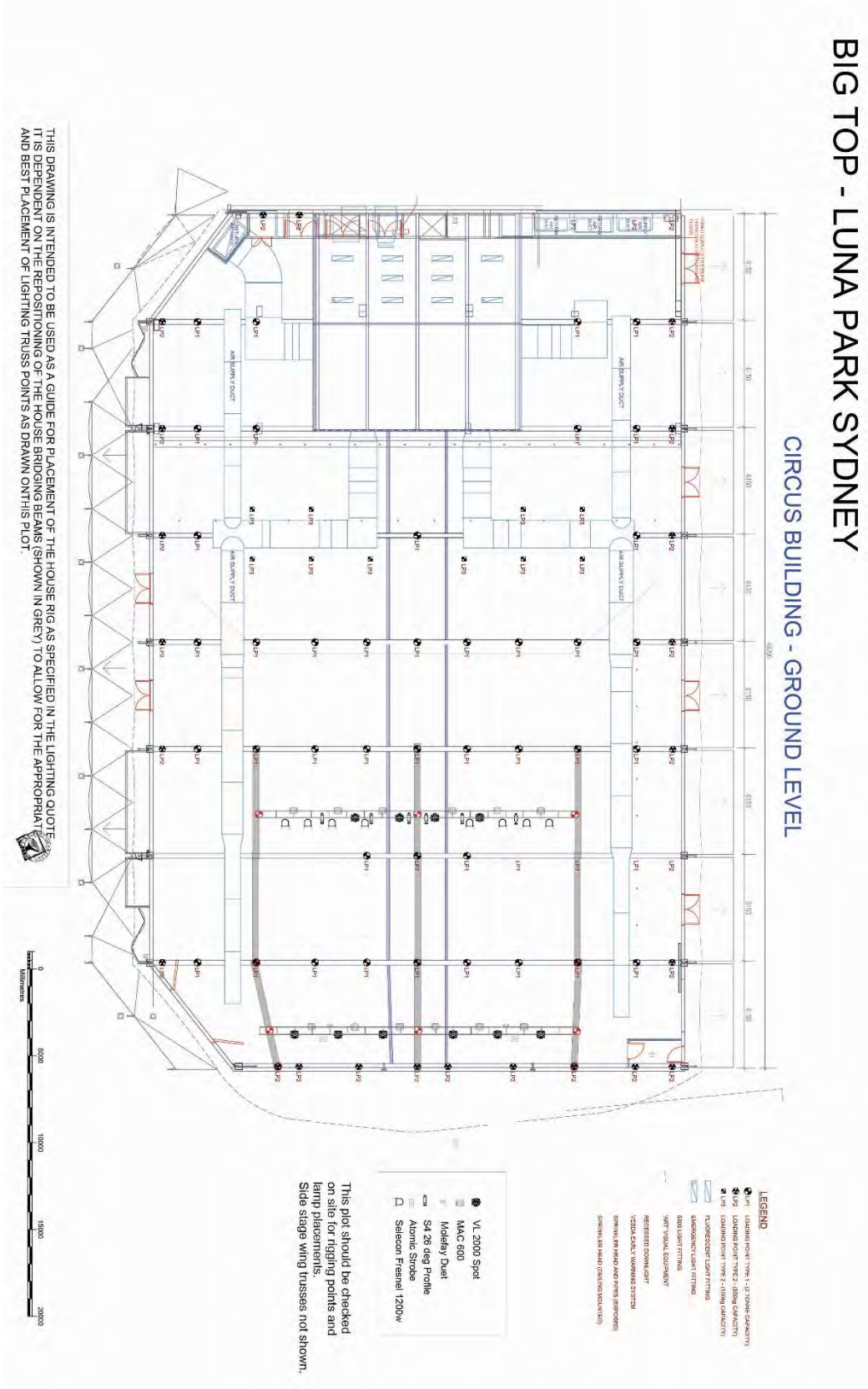
\*Please note that if the show requires the lights to be programmed and operated additional cost will apply.

**Big Top In-House Lighting Patch:**

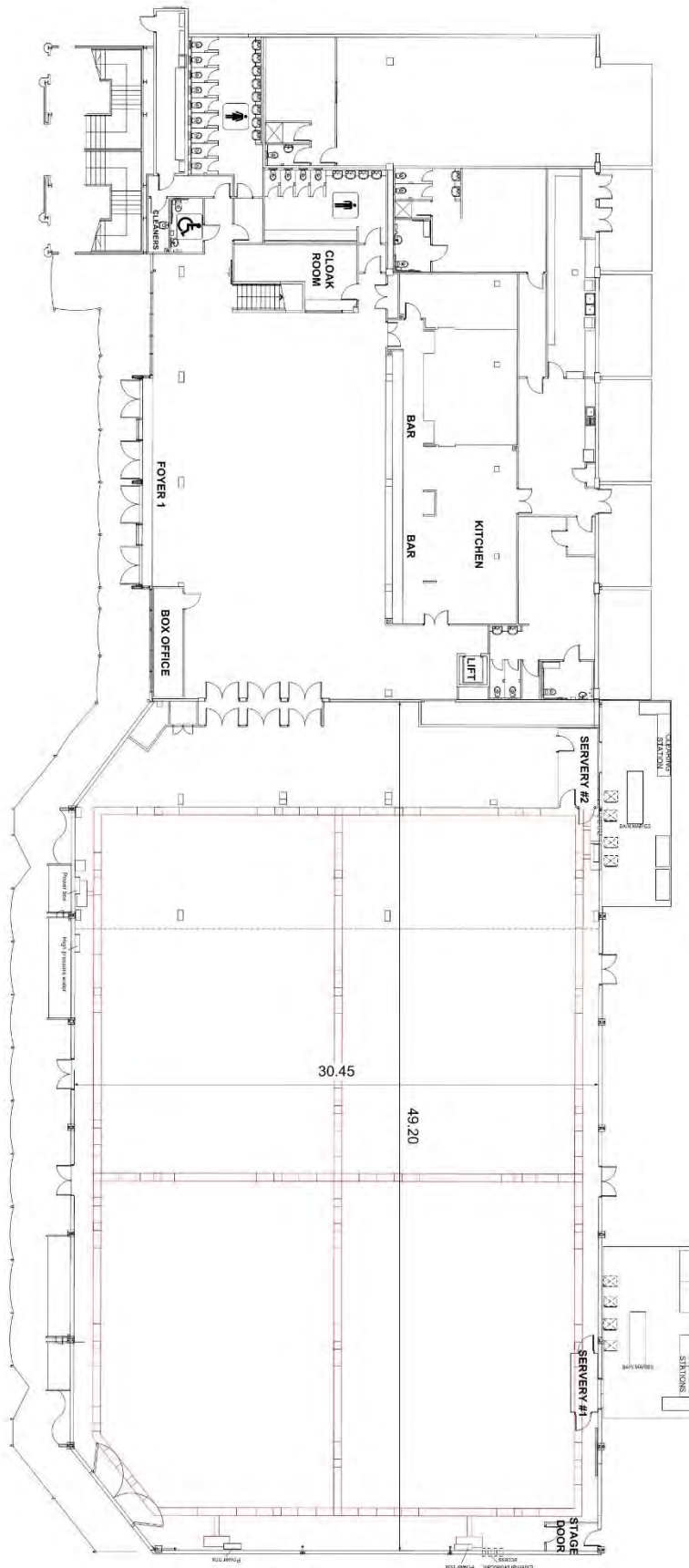
Fixture:	Fix: I.D	Address	Stream	Location
VL 2000 Spot Ext Mode	#201	1	Stream 1	"A Truss"
VL 2000 Spot Ext Mode	#202	18	Stream 1	"A Truss"
VL 2000 Spot Ext Mode	#203	35	Stream 1	"A Truss"
VL 2000 Spot Ext Mode	#204	52	Stream 1	"A Truss"
VL 2000 Spot Ext Mode	#205	69	Stream 1	"B Truss"
VL 2000 Spot Ext Mode	#206	86	Stream 1	"B Truss"
VL 2000 Spot Ext Mode	#207	103	Stream 1	"B Truss"
VL 2000 Spot Ext Mode	#208	120	Stream 1	"B Truss"
VL 2000 Spot Ext Mode	#209	137	Stream 1	"B Truss"
VL 2000 Spot Ext Mode	#210	154	Stream 1	"B Truss"
Mac 600 Wash Mode 4	#601	171	Stream 1	"A Truss"
Mac 600 Wash Mode 4	#602	185	Stream 1	"A Truss"
Mac 600 Wash Mode 4	#603	199	Stream 1	"A Truss"
Mac 600 Wash Mode 4	#604	213	Stream 1	"A Truss"
Mac 600 Wash Mode 4	#605	227	Stream 1	"A Truss"
Mac 600 Wash Mode 4	#606	241	Stream 1	"A Truss"
Mac 600 Wash Mode 4	#607	255	Stream 1	"B Truss"
Mac 600 Wash Mode 4	#608	269	Stream 1	"B Truss"
Mac 600 Wash Mode 4	#609	283	Stream 1	"B Truss"
Mac 600 Wash Mode 4	#610	297	Stream 1	"B Truss"
Mac 600 Wash Mode 4	#611	311	Stream 1	"B Truss"
Mac 600 Wash Mode 4	#612	325	Stream 1	"B Truss"
Atomic Strobe Mode 4	#301	341	Stream 1	"B Truss"
Atomic Strobe Mode 4	#302	345	Stream 1	"B Truss"
Dim Channel (Leko)	#401	401	Stream 1	"A Truss"
Dim Channel (Leko)	#402	402	Stream 1	"A Truss"
Dim Channel (Leko)	#403	403	Stream 1	"A Truss"
Dim Channel (Leko)	#404	404	Stream 1	"A Truss"
Dim Channel (Leko)	#405	405	Stream 1	"A Truss"
Dim Channel (Leko)	#406	406	Stream 1	"A Truss"
Dim Channel (Leko)	#407	407	Stream 1	"A Truss"
Dim Channel (Leko)	#408	408	Stream 1	"A Truss"
Dim Channel (Molefay)	#409	409	Stream 1	"B Truss"
Dim Channel (Molefay)	#410	410	Stream 1	"B Truss"
Dim Channel (Molefay)	#411	411	Stream 1	"B Truss"
Dim Channel (Molefay)	#412	412	Stream 1	"B Truss"

# BIG TOP - LUNA PARK SYDNEY

## CIRCUS BUILDING - GROUND LEVEL

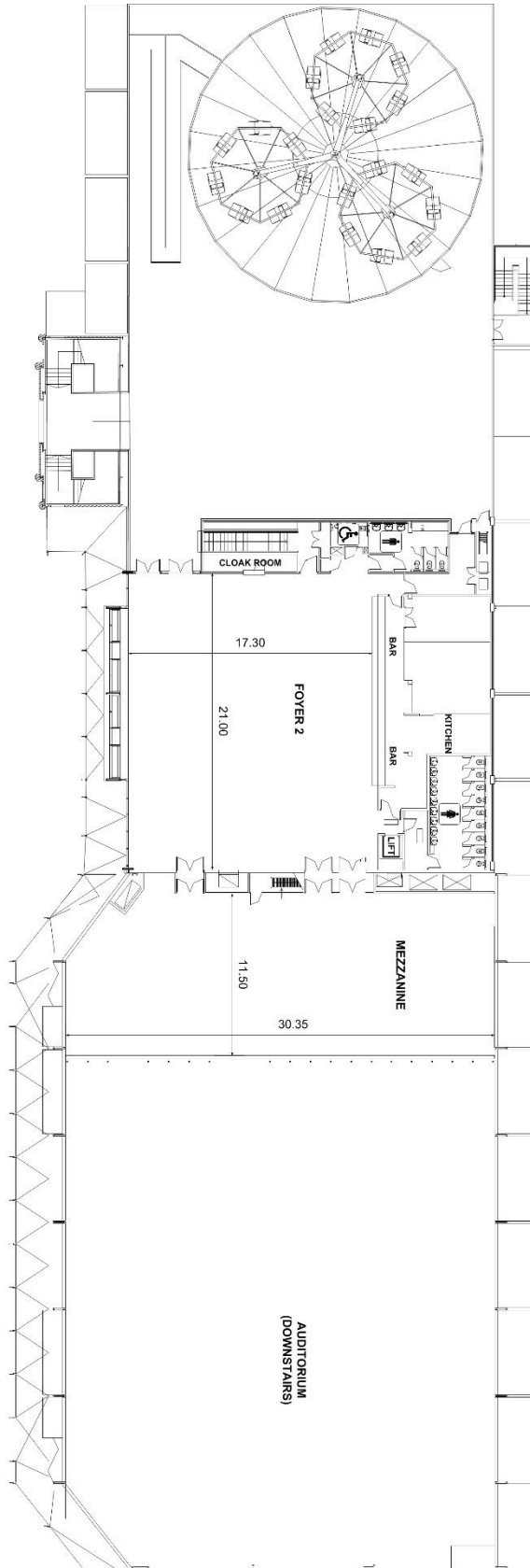


**VENUE FLOOR PLANS** (not to scale)



**BIG TOP  
GROUND LEVEL**

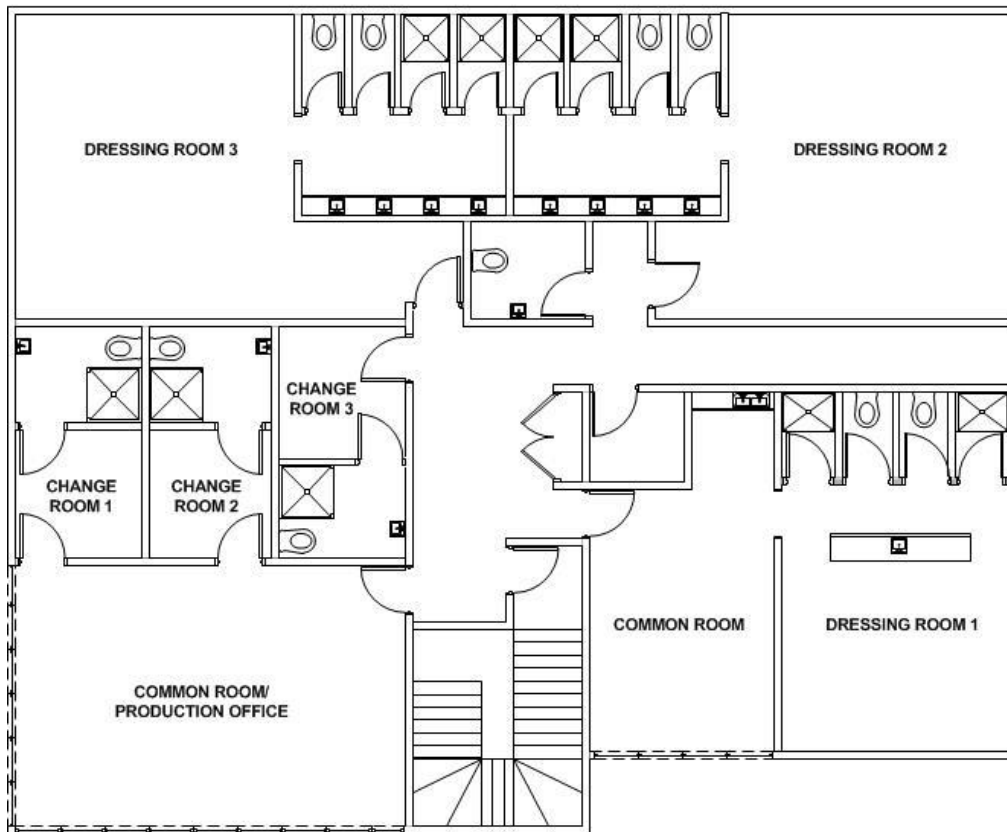




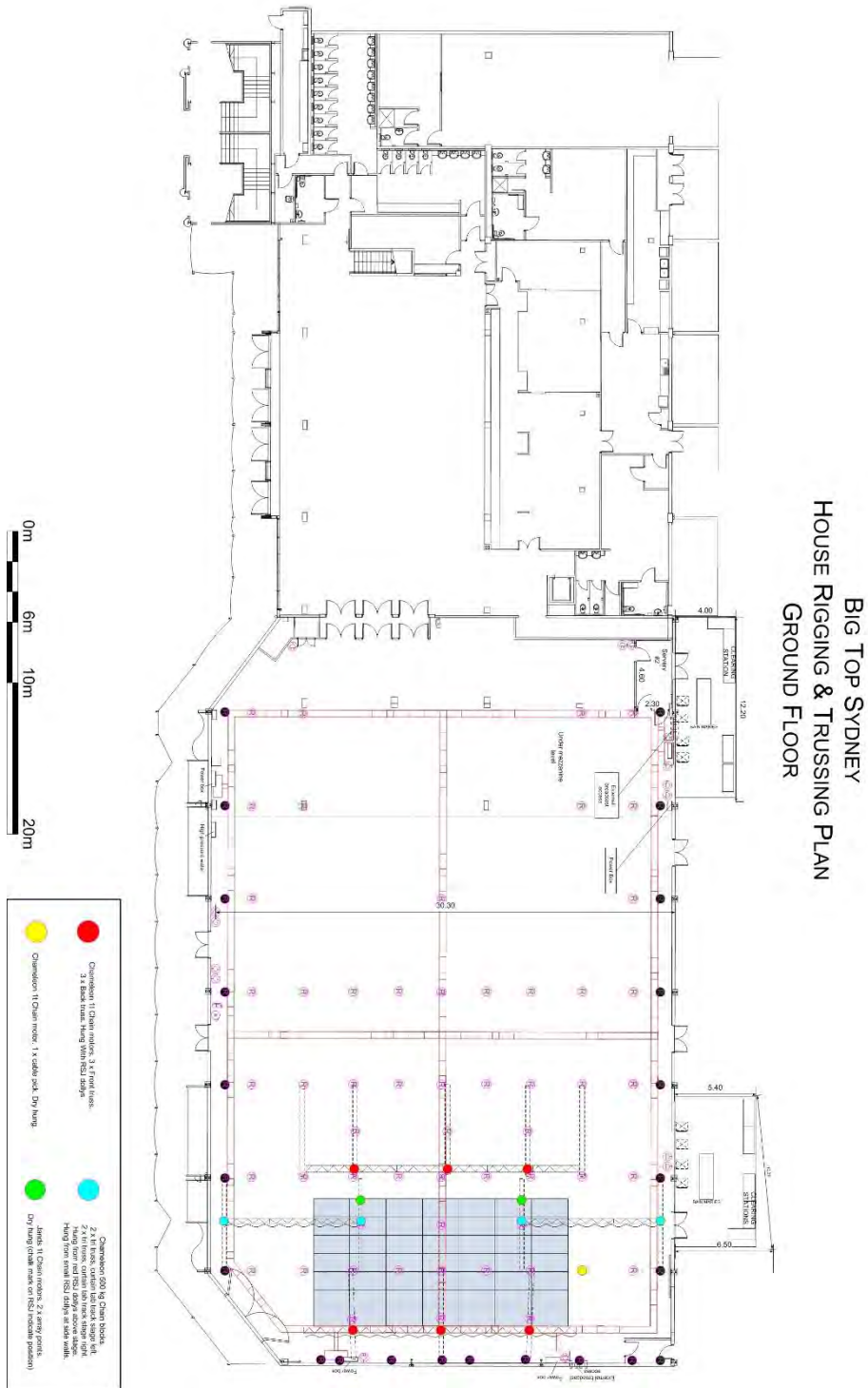
**BIG TOP  
LEVEL 1**



## BIG TOP GREEN ROOMS



**HOUSE PRODUCTION RIGGING PLAN (not to scale)**





**LOADING DOCK & DELIVERY INSTRUCTIONS**

The **LOADING DOCK** is accessible via the Luna Park Car Park (cnr Paul & Northcliff St).

Press intercom at boom gate, and advise security you have a delivery for \*NAME OF EVENT\*. It is best to call ahead to ensure there is a parking spot available.

Access is available free of charge for **15mins**. Parking costs are the responsibility of the driver.

**Height restriction – 1.9m.**

NOTE: Car park gates are locked between midnight – 7am.

**Security Control:** 02 9033 7595

Deliveries **DIRECT** to the BIG TOP Auditorium must be **APPROVED** by the Event Manager.

Access is via 1 Olympic Drive. There is a vehicle gate at the entrance to the Park, located to the right of “The Face”.

Access is available until **ONE HOUR** prior to the park opening.

On no account can vehicles drive into the Park without an escort. They must also use hazard lights and drive at walking pace only.

If a **FORKLIFT** is required, please advise the Event Manager. They will arrange one for you.

Vehicles can't re-enter the park for **BUMP OUT** until the rides are closed, or all guests have departed (whichever is later). Above procedures still apply.





## **WHS REGISTRATION & INDUCTION**

Luna Park has safety policies and procedures based on current WHS regulations. These policies are for your protection and to alert you of any risks. It is your responsibility to ensure that you understand and follow these safety procedures, specific company safety regulations, signs and legal requirements that may apply to your job. For all events the following safe work practices will be implemented:

1. Do not commence any work until you have read and understood these safety procedures and know the safety requirements for your specific job. Ensure you have read and understood the SWMS provided by your employer.
2. The speed limit on site is 5km/hr and you must strictly observe this limit
3. You must be alert on and for forklifts, EWP's and any other moving vehicle.
4. You must NOT touch any equipment unless you are authorized to work on or with that equipment and you have followed correct safety procedures.
5. Emergency evacuation procedures: on hearing or being aware of a fire, non theatrical smoke, fire alarm or other emergency warning system, you MUST vacate to the nearest EXIT if safe to do so. Wardens and security personnel will direct you to an assembly point where you will remain until you are given further instructions.
6. You must report any unattended baggage or suspicious items immediately to Security. DO NOT interfere with or inspect any such item.
7. You must protect yourself if there is any risk of personal harm by wearing the correct PPE for your job. (ie safety helmets, footwear, eye and hearing protection and gloves)
8. You must report all injuries to the Safety Officer and/or Venue Manager.
9. You must report that your work area is safe at all times.
10. Practical jokes and horseplay are not permitted.
11. Access to Emergency Exits must not be obstructed in any way by materials or equipment. You must not interfere with any fire fighting equipment, safety systems or fire detection systems.
12. Full body harnesses are required for all climbing personnel working above 1.8 metres.
13. All non fixed electrical equipment must comply with Australian Standards and be tagged with the appropriately dated or coloured tag for that particular appliance.
14. Hand tools, ladders, "soft goods" and drapes must be all in safe and good condition and tagged where necessary.
15. Persons will NOT be permitted to commence or continue work on site if under the influence of drugs and alcohol. Smoking is strictly prohibited within any building at Luna Park.  
In making the Big Top a safer working environment for all personnel it is the responsibility of the event production company/contractor/event organizer to meet the above obligations. Luna Park Sydney accepts no responsibility for the provision of equipment for these work practices.

## **EMERGENCY PROCEDURES:**

1. If you see a fire or emergency situation:
  - Raise the alarm by activating a red or white break glass,
  - Notify the Communications Officer on a red WIP phone or
  - Call Security Control on 9033 7595
2. On the alarm being raised, be aware that there is an emergency situation. (Alert tone: Beep, Beep, Beep).
3. Prepare to evacuate the building.
4. Commence Evacuation when advised to do so.
5. Follow the Instructions given by the Wardens and evacuate the building (Evacuation Tone: Whoop, Whoop. This will be followed by an announcement over the Public Address System.).
6. Assist mobility impaired persons where possible.
7. Move well clear of the building, do not re-enter unless advised to do so by the Warden or Fire Brigade.
8. Proceed immediately to the designated assembly point to be accounted for.